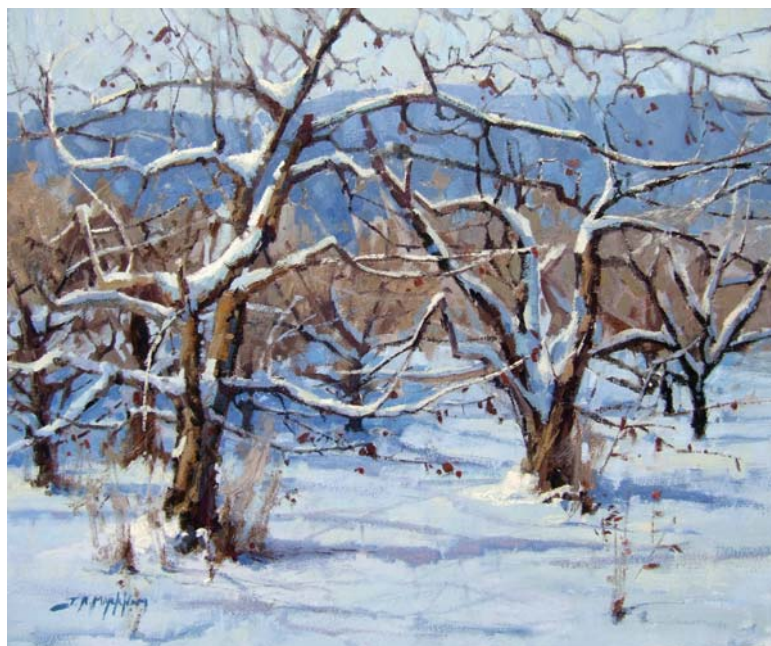


Honorable Mention

Jerry Markham

www.jerrymarkham.com



Winter Orchard (oil, 20x24)

Winter Orchard was inspired by a scene in Jerry Markham's hometown of Vernon, British Columbia. "I wanted," says the artist, "to paint the late autumn snow lying on the branches with a few leaves remaining. It was

beautiful, and I wanted to represent the feeling of the day and convey a sense of place."

To achieve this end, Markham typically works from life—making drawings and a small painting on-site to work out composition and values—and then he moves to the studio to create his larger, finished piece. Because of time constraints, he had to go directly to the studio with photos for this piece.

Drawing the branches and painting the negative spaces between them proved most challenging and time consuming. "It's always hard to say how long a painting will take," says the artist. "It's a balance between being complete and not overworking the painting."

Disappointed in an art school's program oriented toward abstract art, Markham soon left and began working at Swinton's Art Supply & Instruction, where he met mentors and friends who encouraged him to grow. He's been painting full time since 2004.

Honorable Mention

Neal Hughes

www.nealhughes.com

"I'm always inspired by the views on Monhegan Island," Neal Hughes says, "in this case, the light early in the morning when the colors are more intense." Although he often uses a traditional underpainting followed by transparent glazes, he did no underpainting for this piece. He painted the foreground foliage and some areas directly but layered the building and other areas. "My underpaintings are usually done with at least some color," he explains. "Then I build up layers, using some transparent colors and some thicker paint, with the thickest usually in the lighter areas."

A former illustrator with national clients in publishing and advertising, Hughes is a full-time painter who has done major commissions for the National Civil War Museum and other groups.

View of Monhegan Island (oil, 24x30)

